

For GMAW (MIG) Process

Diameter

mm	0.60	0.80	0.90	1.00	1.20	1.60
inch	0.025	0.030	0.035	0.040	0.045	0.062

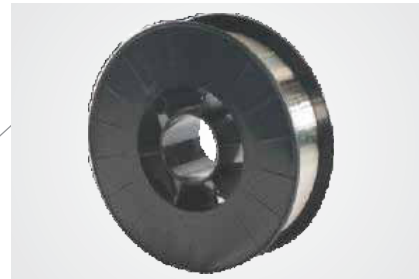
Finish

Bright, Matt & Semi Bright

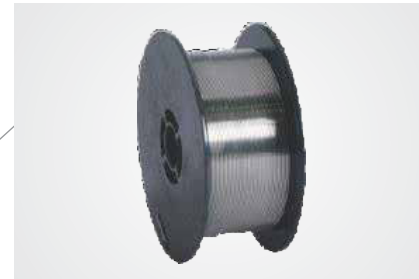
Packaging



12.5 kg. / 25lb., 15kg. 30 lb./ 33 lb.
Layer wound Plastic spools/
Basket spool



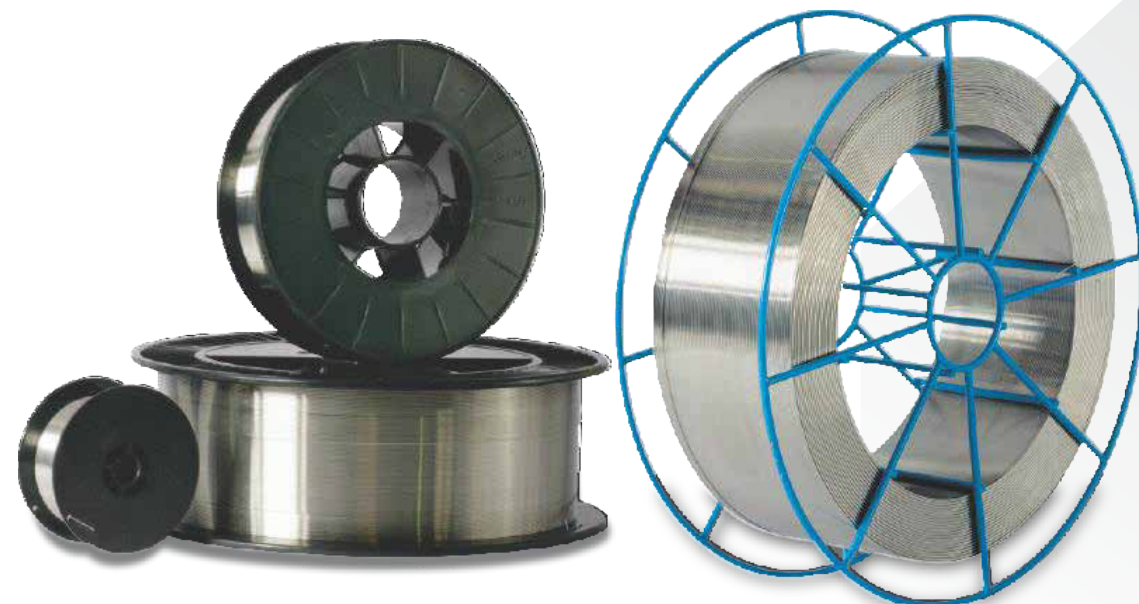
5 kg. / 10 lb. Layer wound
plastic spools / Basket spool



1 kg. / 2 lb. Layer wound
plastic spools

SIZE		STANDARD SPOOLS			
MM	INCH	Metallic Basket K 300	SD 300/BS300	SD 200/BS200	SD 100
0.60	0.025	10 kg./20 lb.	10 kg./20 lb.		
0.80	0.030				
0.90	0.035				
1.00	0.040	12.5 kg. / 25 lb.	12.5 kg./25 lb.	5 kg.	1 kg.
1.20	0.045	15 kg. / 30 lb./33 lb.	15 kg./30 lb./33 lb.	(10 lb.)	(2 lb.)
1.60	0.062				

We also offer "Customized Packaging & Labelling Solutions" as per requirements.



Pail Packing System for Automatic Welding

MIG Wires in Fiber Drums of 100-125 Kgs (200-250 lbs) / 200-225 Kgs (450 - 500 lbs) available for high productivity GMAW process and robotic applications.

Increase in productivity

With less down time compared to standard spools

Less wear on welding machine parts

No twist pay - off system

Clean conditions

No contamination from the shop environment

Low space requirement

The drum diameter is only 510 mm

Short set up time

Adapt quick and easily to any conventional feeder

Grades

307, 307Si, 308, 308H, 308L, 308LSi, 309, 309L, 309LSi, 309LMo, 310, 312, 316, 316H, 316L, 316LSi, 317, 317Si, 318Si, 321, 347, 347Si, 409, 409Cb, 409Ti, 410, 410NiMo, 420, 430, 430LNb, 904L, 2209

*also offered in equivalent DIN Standard



We also offer "Customized Packaging & Labelling Solutions" as per requirements.