



SM-15

NABAKEM SM-15 (MAGNETIC PARTICLE SPRAY)

Packaging Unit Aerosol 450Ml/Can, 20cans/Box

Features

SM-15 is black magnetic particle and high sensitive and precise normal magnetic particle that tests with White Light. It is oil base type with low toxicity, high boiling point and no corrosion. Also it is very economic and effective product. This product, SM-15, can be applied on inner defective area of surface or closed to the surface and it is also suitable for testing the defective area when being processed or finished product.

Component

SM-15 is the mixture of special black magnetic particle and oil base.

Uses

SM-15 is the testing material that can examine the minute crack and crevice. It is applied for testing the defective area such as seams, shrink cracks, tears, laps, flakes, welding defect, grinding cracks, quenching cracks and fatigue cracks.

How to Use

1. Please clean the contaminants on the surface that needs to be tested with cleaner(Mega Check).(Drying Time 5 ~10min)
2. Please spray the white paint (MP-35) evenly.
3. Please form the magnetizing current magnetic field.
4. Please spray the black magnetic particle spray (SM-15) evenly.
5. Please examine the testing area with naked eye

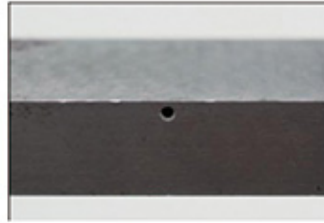
Testing Equipment & Magnetic particle Detecting Spray

Testing Object

1. Cleaning of Testing Object
2. Spray MP-35(White Paint)
3. Forming the magnetizing current magnetic field
4. Spray SM-15(Black Magnetic particle)
5. Examine the defective area with naked eye



검사장비 및 자분탐상 스프레이



검사물



1. 검사물 세척



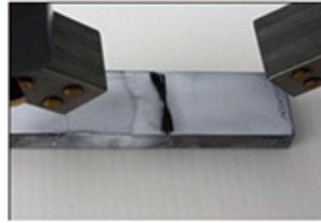
→ 2. MP-35(백색검사제) 스프레이 도포



3. 자화전류 자장 형성



→ 4. SM-15(일반자분) 스프레이 도포



→ 5. 결함부위 육안 검사



Cautions

- This flammable product uses high-pressure gas.
- Comply with following cautions.
1. Do not spray it toward flame.
 2. Do not use it near stove and heater.
 3. Do not use it in the room using fire.
 4. Do not keep in the place above 40°C
 5. Provide ventilation after using it in closed room.
 6. Do not throw it into fire.
 7. Punch the can after use for and remove residual gas to throw it away.
 8. Do not keep it in the closed place.