

Product Data Sheet



LS-GSP0 200K-35

EAN 4047526605841

ID 605840

Welded steel heavy duty swivel castor, strong swivel head design, Heavy duty wheels made of cast nylon

Bracket:

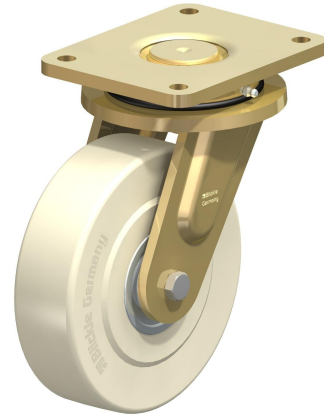
Particularly rugged welded steel construction, with axial grooved ball bearing DIN 711 and tapered roller bearing DIN 720 in the swivel head, dust and splash-proof, fitted grease nipple, bolted and secured with a welded very strong central kingpin. Bolted wheel axle. Zinc-plated, yellow-passivated, Cr6-free.

Wheels:

Made of high-quality, impact-resistant, hard and tough, highly compressed cast nylon with outstanding load capacity, very low rolling and swivelling resistance, smooth running performance on even floors, very high abrasion resistance.

Tread colours: natural beige

Wheel centre/rim: - Wheel centre colour: natural beige



Rolling resistance

■■■■■ Excellent

Operating noise

■■□□□ Satisfactory


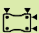


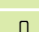


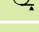

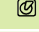

Floor surface preservation

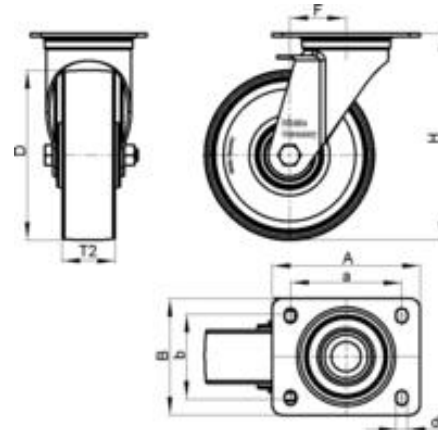
■■□□□ Satisfactory

Product Data Sheet



Technical data

Plate size		175 x 140
Bolt hole spacing		140 x 105
Bolt hole Ø		14
Wheel Ø		200 mm (D)
Wheel width		55 mm (T2)
Load capacity		3000 kg
Total height		255 mm (H)
Offset swivel castor		65 mm
unit weight		9,3 kg
Temperature resistance to		-25 ° C
Temperature resistance to		80 ° C
tread and tyre hardness		80° Shore D
Bearing type		Ball bearing



Product Data Sheet

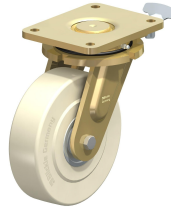


Variants



LS-GSP0 200K-35-ST

Welded steel extra heavy duty swivel castors, extra strong swivel head design, with 'stop-top' brake, Heavy duty wheels made of cast nylon



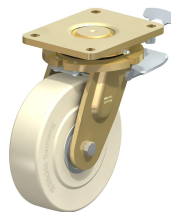
LS-GSP0 200K-35-RI4

Welded steel heavy duty swivel castor, strong swivel head design, Heavy duty wheels made of cast nylon



LS-GSP0 200K-35-RI2

Welded steel heavy duty swivel castor, strong swivel head design, Heavy duty wheels made of cast nylon



LS-GSP0 200K-35-ST-RI4

Welded steel extra heavy duty swivel castors, extra strong swivel head design, with 'stop-top' brake, Heavy duty wheels made of cast nylon



LS-GSP0 200K-35-ST-RI2

Welded steel extra heavy duty swivel castors, extra strong swivel head design, with 'stop-top' brake, Heavy duty wheels made of cast nylon