

# Product Data Sheet



## LHF-ALBS 200K

EAN 4047526109806

ID 742296

**Pressed steel swivel castor, heavy duty castors, with steel spring, Heavy duty wheel with Blickle Besthane® Soft polyurethane tread, with aluminium wheel centre**

### Bracket:

Made of heavy pressed steel, with heavy fork and top plate, very strong bolted and secured central kingpin, double ball bearing in the swivel head, additionally reinforced by the integration of four specially shaped and hardened bearing seats resulting in a very high resistance to shock and impact loads. Rugged hinged plate construction with maintenance-free steel spring mechanism. Bolted wheel axle. Zinc-plated, blue-passivated, Cr6-free.

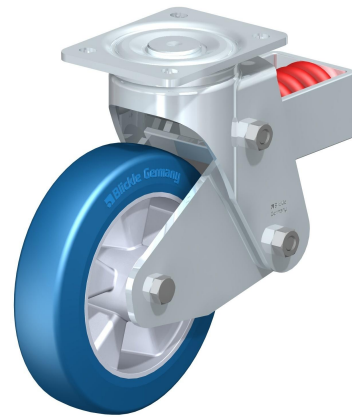
### Wheels:

Made of high-quality, reaction-injected polyurethane-elastomer Blickle Besthane® Soft, very high operational comfort through the especially thick, elastic tread, low-noise operation, very low rolling resistance, high dynamic load capacity, very good floor preservation, very high abrasion resistance, high cut and tear propagation resistance, very good chemical connection with the wheel centre.

**Tread colours:** blue

**Wheel centre/rim:** Made of die-cast aluminium. Casted tread.

**Wheel centre colour:** silver grey



### Rolling resistance

■■■■■ Excellent

### Operating noise

■■■■■□ Very good

### Floor surface preservation

■■■■■□ Very good

# Product Data Sheet



## Technical data

Plate size		140 x 110
Bolt hole spacing		105 x 75-80
Bolt hole Ø		11
Wheel Ø		200 mm (D)
Wheel width		50 mm (T2)
Load capacity		700 kg
Spring tension		570 kg
Initial tension		50 kg
Spring travel		25 mm
Total height		265 mm (H)
Offset swivel castor		65 mm
unit weight		8,2 kg
Temperature resistance to		-25 ° C
Temperature resistance to		70 ° C
tread and tyre hardness		75° Shore A
Bearing type		Ball bearing

