

Product Data Sheet



HRP-POA 72G

EAN 4047526117597

ID 757021

Levelling castor with integrated truck lock and top plate fitting, Nylon wheel

Bracket:

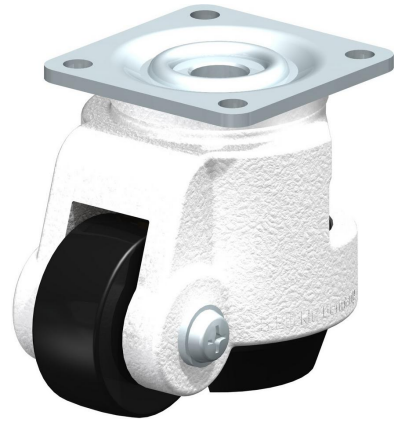
Made of die-cast aluminium, with sealed ball bearing in the swivel head, steel top plate fitting. Powder-coated, ivory colour. Truck lock made of hard rubber, black. Height adjustment with flat spanner or integrated adjustment wheel. Bolted wheel axle. Steel parts are zinc-plated, blue-passivated, Cr6-free.

Wheels:

Made of high-quality, impact-resistant nylon, very low rolling and swivelling resistance, smooth running performance on even floors, very high abrasion resistance.

Tread colours: black

Wheel centre/rim: - **Wheel centre colour:** grey



Rolling resistance

■■■■■ Excellent

Operating noise

■■□□□ Satisfactory

Floor surface preservation

■■□□□ Satisfactory

Product Data Sheet



Technical data

Plate size		95 x 95
Bolt hole spacing		70 x 70
Bolt hole Ø		11
Wheel Ø		72 mm (D)
Wheel width		32 mm (T2)
Load capacity		750 kg
Total height		122 mm (H)
Max. total height		134 mm (h)
Adjustment range		12 mm (T4)
Offset swivel castor		52 mm
unit weight		1,8 kg
Temperature resistance to		-25 ° C
Temperature resistance to		80 ° C
tread and tyre hardness		70° Shore D
Bearing type		Plain bore

